



Park Lane Court Park Lane
, Knebworth, SG3 6PJ

£1,600

2 2 1

Park Lane Court Park Lane, Knebworth, SG3 6PJ

Greenhill Estates are delighted to bring to market for let this truly exceptional BRAND NEW 1059sq ft two bedroom, two bathroom first floor apartment with lift access, two balconies, allocated parking spaces and internally has been finished to the highest of standards with underfloor heating and high quality fixtures and fittings throughout. Park Lane Court is also conveniently located opposite Knebworth train station which offers direct access into London Kings Cross and Finsbury Park in circa 30 minutes. Knebworth High Street is also a stones throw from the property and offers an array of local ammenties including local shops, pubs and restaurants. Forming part of a bespoke block of brand new apartments, this unique property combines the perfect blend of luxury and convenience and a viewing is strongly advised to appreciate the wonderful home.

AVAILABLE NOW PLEASE DON'T ENQUIRE IF YOU ARE NOT READY TO MOVE IMMINENTLY



Step Inside

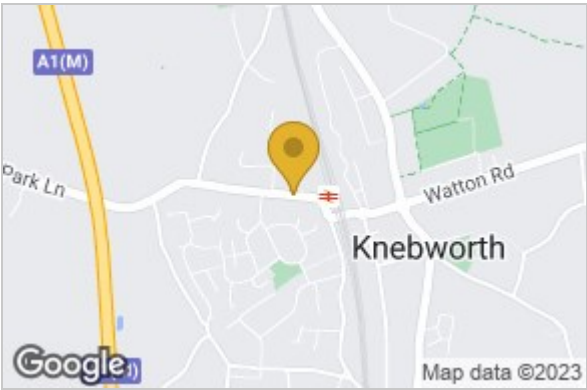
Step Outside

Location

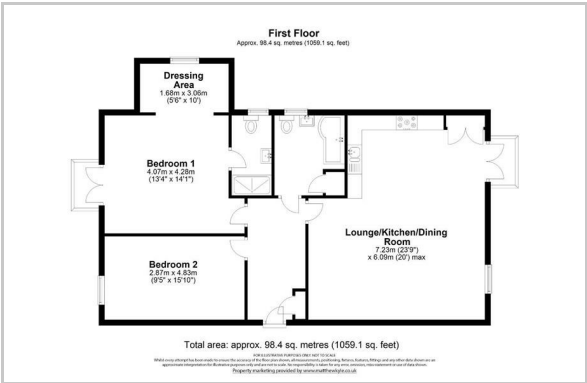
Full Specification



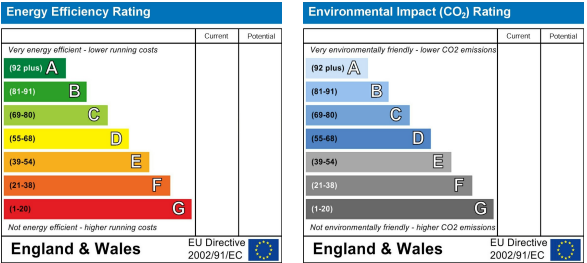
Area Map



Floor Plan



Energy Efficiency Graph



These particulars, whilst believed to be accurate are set out as a general outline only for guidance and do not constitute any part of an offer or contract. Intending purchasers should not rely on them as statements of representation of fact, but must satisfy themselves by inspection or otherwise as to their accuracy. No person in this firms employment has the authority to make or give any representation or warranty in respect of the property.